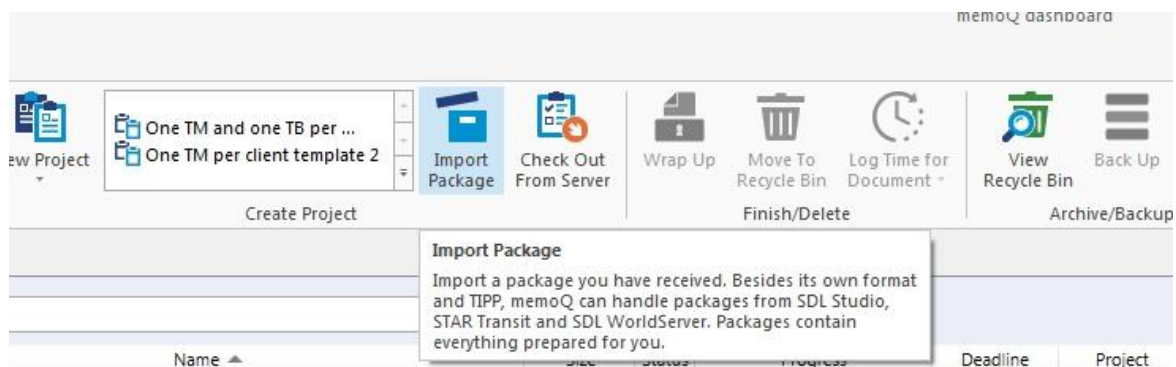


Duo files and how to import them into MemoQ

Importing a package

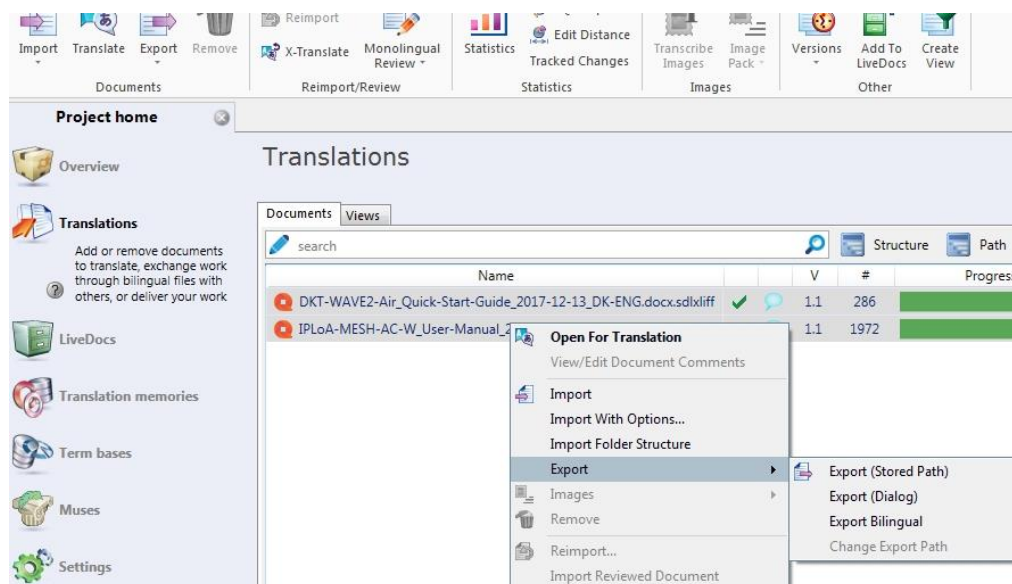
1. We send you an SDL project package that includes a TM (.sdlppx).
2. You will need to import this into MemoQ:



You will need to click on this button to import packages. A wizard will open that lets you adjust some settings (target language, client, type of project etc.), after which everything will be imported as a complete project.

NOTE: After importing an SDL package, you can simply add your own memories, glossaries, and other resources to the project.

3. Once you've finished translating the project, you can export it in the usual way by right-clicking on the file(s) and then selecting 'Export (stored path)'. A .sdlrpx file (a return package) will then appear in the folder in which you first saved the original package (.sdlppx):

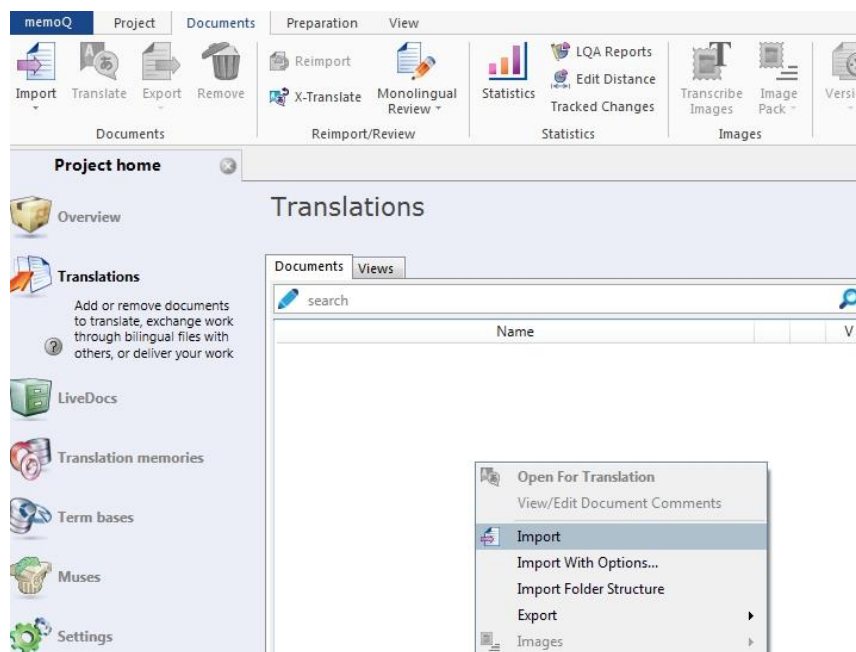


4. You can now deliver the translation in .sdlrpx format to Duo.

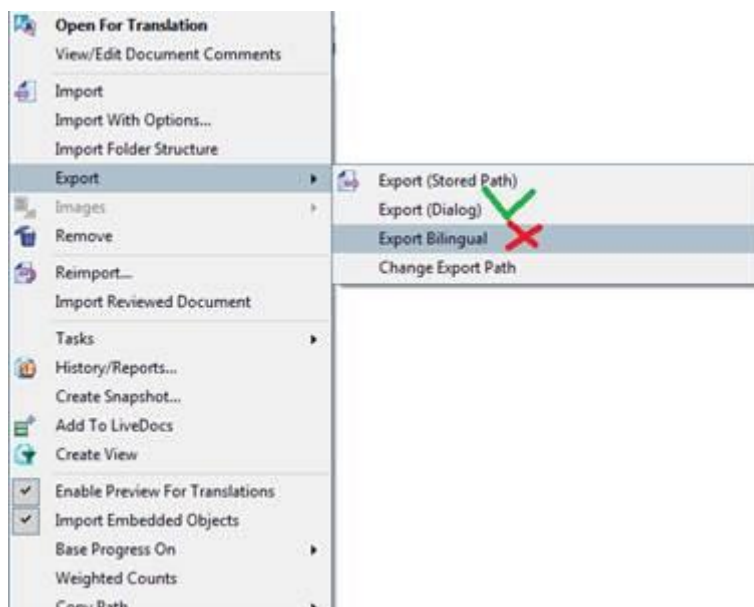
Duo files and how to import them into MemoQ

Importing a single XLIFF file

1. We send you a separate .sdlxiff file and a separate TM in .tmx format.
2. You can import the TM however you like into a MemoQ TM.
3. The .sdlxiff can be imported into an existing project in the usual way (by clicking on the 'Import' button or by right-clicking on the Translations tab in a project and selecting 'Import'):



4. Once the translation is ready, export the translation as follows ('Export Dialog'):



5. You can now deliver the translation in .sdlxiff format to Duo (so no return package in this case).